

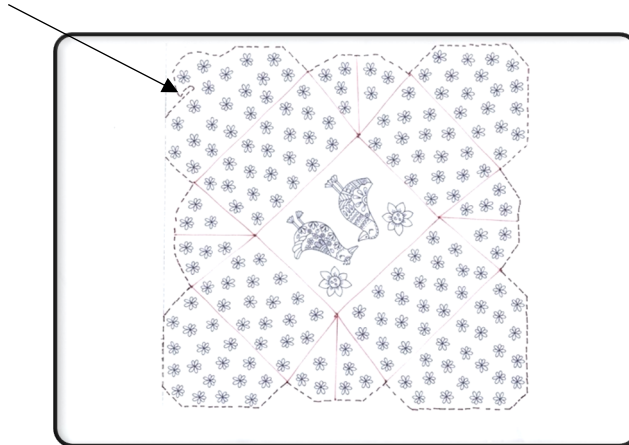
Make a Gift-Giving Box

Each family needs

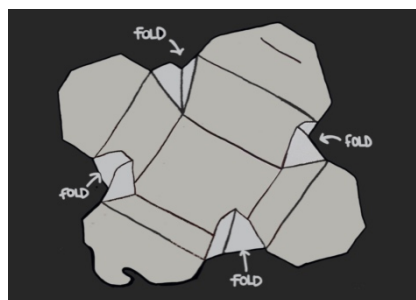
- An A3 card single side printed box template sheet
- Pair of scissors
- A ruler
- Colouring pencils/felt tips
- A glue stick (just in case!)

Instructions

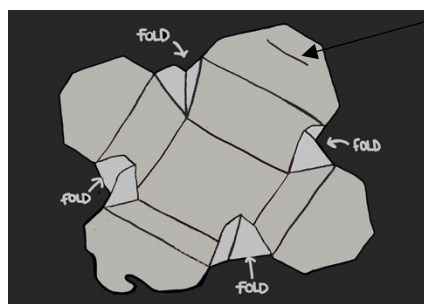
1. Carefully, ONLY cut along the black dashes marked around the outline of the box.



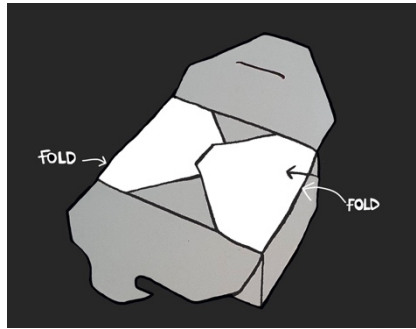
2. Colour in the whole box.
3. Place a ruler along each black solid line and gently 'score' along the line using the blunt edge of closed scissors.
4. Turn the sheet over, so the pattern is facing the tabletop. Then fold each of the triangular corner sections along the scored line towards the centre of the box.



5. On the opposite side to the 'hook' carefully cut a small opening into the card.



6. Holding all four sides of the box together, fold the two lid flaps across to form the top of the box.



7. Then, fold the two larger lid flaps over the top and fasten the curved hook to secure your box.



8. Once you have completed the box, seal with a stick-on bow or gift label.